
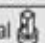




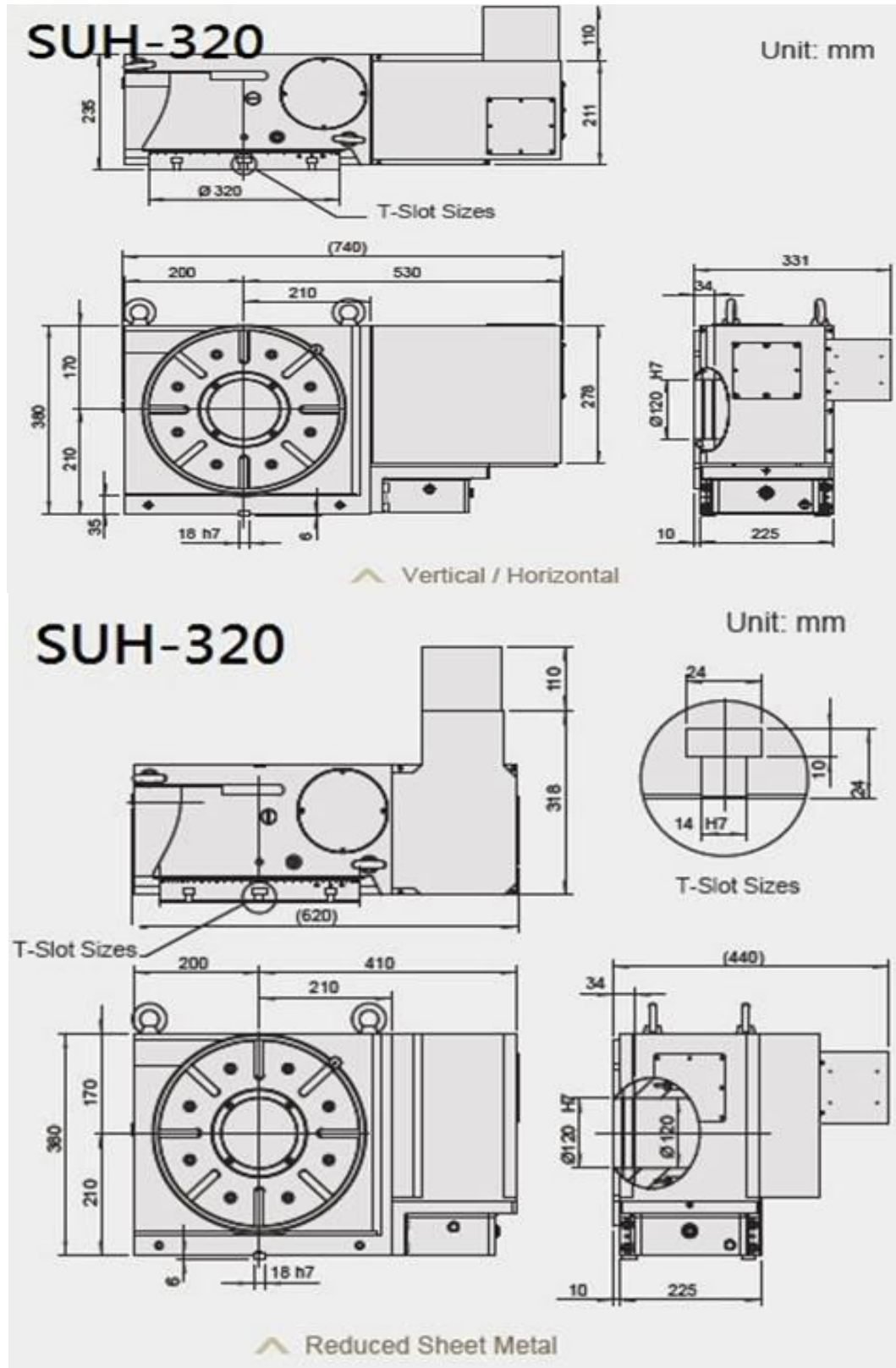


ACCURATE / ROTARY TABLE SERIES

CNC ROTARY TABLE - SUH

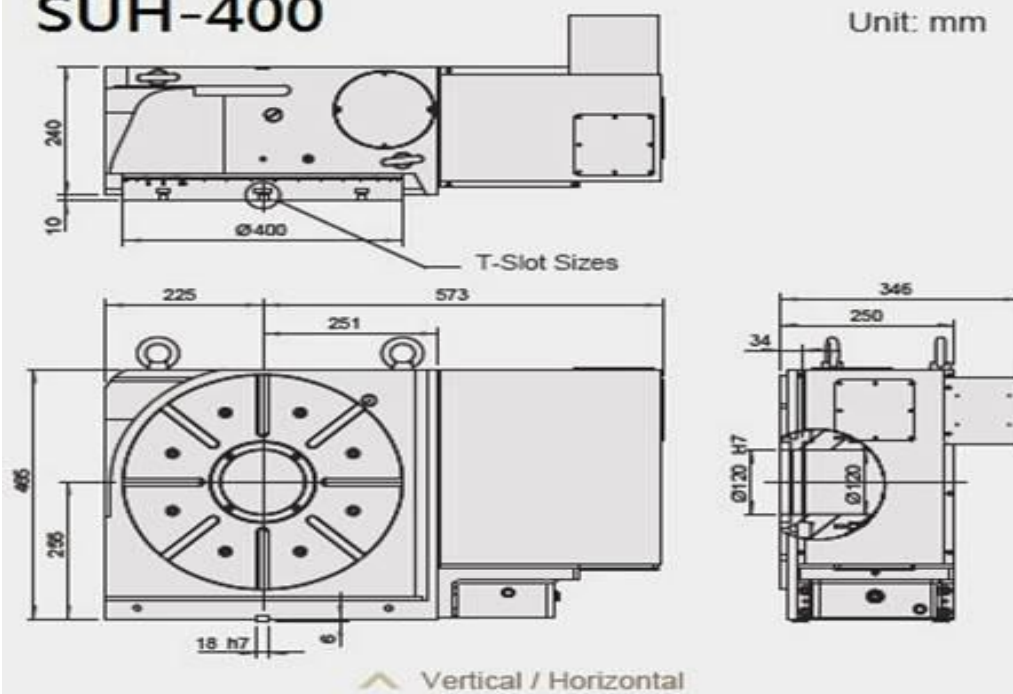
MODEL		UNIT	SUH-255	SUH-320	SUH-400	SUH-500	SUH-630
Table diameter		mm	Ø255	Ø320	Ø400	Ø500	Ø630
Center hole diameter		mm	Ø80H7	Ø120H7	Ø120H7	Ø220H7	Ø280H7
Through-hole diameter		mm	Large hole Ø80	Large hole Ø120	Large hole Ø120	Large hole Ø220	Large hole Ø280
Height of center (vertical)		mm	160	210	255	310	400
Height of table (horizontal)		mm	200	235	250	290	325
T-slot width of table		mm	12H7	14H7	14H7	18H7	18H7
Width of guide block		mm	18h7	18h7	18h7	18h7	18h7
Min. increment		deg.	0.001	0.001	0.001	0.001	0.001
Indexing accuracy		arc. sec.	15	15	15	15	15
Repeatability		arc. sec.	4	4	4	4	4
Clamping method (hyd. pressure)		kg/cm ²	35	35	35	35	35
Clamping torque		kg-m	60	115	200	370	600
Servo motor model	FANUC	Taper shaft with key	α4i / β8is	α12i / β22is	α12i / β22is	α12i / β22is	α12i / β22is
	Mitsubishi	Taper-shaft / Straight shaft	HF-54 / 104	HF-204	HF-204	HF-204	HF-204
Speed reduction ratio		-	1 : 120	1 : 120	1 : 120	1 : 180	1 : 180
Max. table speed (Fanuc & motor)		rpm	33.3	25	25	16.6	16.6
Allowable load inertia capa. (horiz.)		kg.cm.sec ²	20.3	44.8	100	187.5	396.9
Allowable workpiece load	Vertical 	kg	110	170	220	250	400
	With tailstock	kg	260	370	520	600	800
	Horizontal 	kg	260	370	520	600	800
Allowable load (Rotary table clamped)	F 	kgf	2000	3000	4000	4000	5000
	FxL 	kgf.m	112	300	400	500	850
	FxL 	kgf.m	55	90	180	320	500
Allowable cutting torque 		kg.m	55	80	170	250	420
Weight (motor excluded)		kg	108	195	314	406	686

PRODUCT INFORMATION:



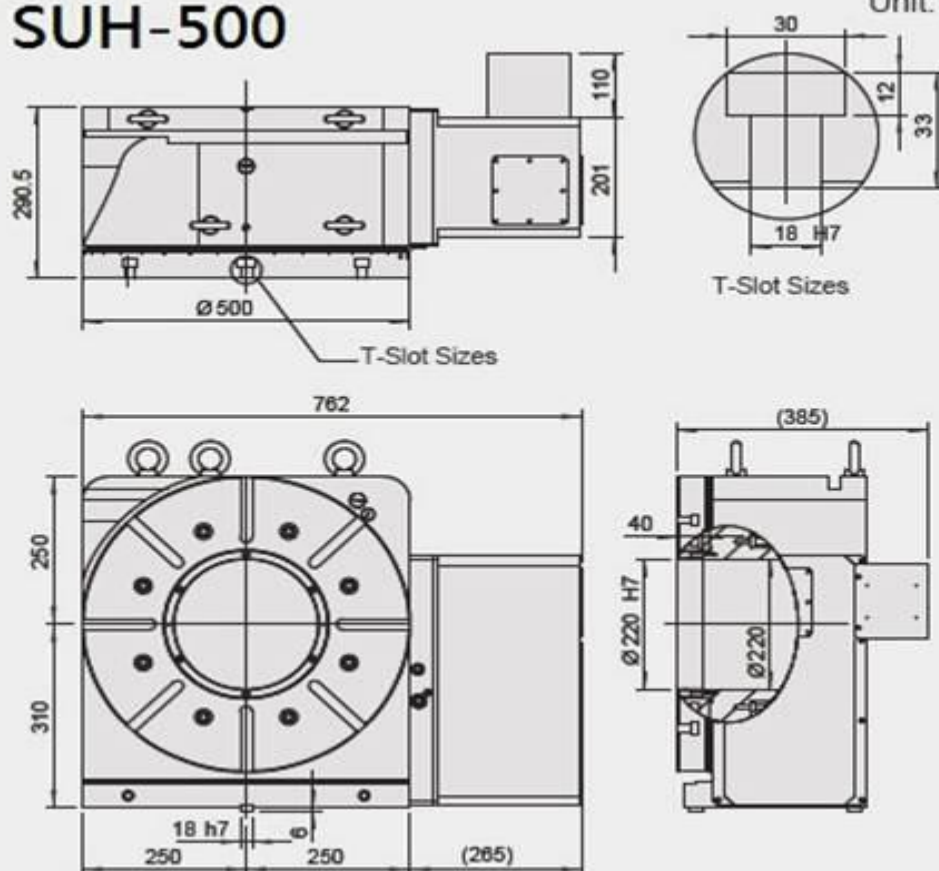
SUH-400

Unit: mm



SUH-500

Unit: mm



SUH-630

Unit: mm

