

Surface Grinding

Automatic PLC Controller

Specifications:

MODEL		ESG-818TD	ESG-1020TD	ESG-1224TD
Table Size		203x460mm	254x508mm	300x600mm
Max.grinding length	Longitudinal	480mm	520mm	600mm
Max.grinding width	Crosswise	228mm	280mm	300mm
Max. distance from table surface to spindle centerline		460mm	column:600mm	585mm
Stadard magnetic chuck size		200x450	250x500	300x600mm
Longitudinal movement of table	Max. travel, hydraulic	480mm	580mm	650mm
	Max. travel, manual	510mm	620mm	730mm
	Max. travel,ininitely variable		60HZ, 5-25m/min, 50HZ, 5-20m/min	60HZ, 5-25m/min, 50HZ, 5-20m/min
Cross transverse travel	Auto transverse increment	1~10mm	1~13mm	1~19mm
	Auto. Constant Feeding Speed	20~320mm/min	20~320mm/min	20~320mm/min
	Max. auto transverse travel	235mm	270mm	310mm
	Max. manual transverse travel	250mm	300mm	340mm
	MPG per Revolution	5mm	5mm	5mm
	MPG per Graduation	0.02mm	0.02mm	0.02mm
Sheelhead vertical infeed	Automatic infeed	0.001~0.05mm	0.001~0.05mm	0.001~0.05mm
	Step feed (jog)	0.001mm	0.001mm	0.001mm
	Rapid travel, Approx	150mm/min	150mm/min	150mm/min
	Slow travel, Approx	6mm/min	6mm/min	6mm/min
Grinding spidle drive	Speed	50/60Hz, 2850 / 3450 R.P.M	60HZ, 3450 R.P.M. / 50HZ, 2850 R.P.M.	60HZ, 1750 R.P.M. / 50HZ, 1450 R.P.M.
	Power rating	2.0HP	3.0HP	5.0HP
Standard grinding wheel	Diameter	203mm	205mm	304mm
	Width	Standard: 7mm; Mzx: 19mm	19mm	31.75mm
	Bore	31.75	19mm MAX. 25mm	76.2mm
Hydraulic motor	Power rating	1.0HPx6P	2.0HPx6P	2.0HPx6P
Crossfeed motor	Power rating	400W	750W	750W
Elevating motor	Power rating	60W	1/4HPx6P	1/4HPx6P
Floor space	Total space required	1810x1285x1680mm	2400x1450x1750mm	2700x1600x1850mm
Weights	Net weight, Approx.	1205KGS	1810KGS	1990KGS
	Gross weight, Approx.	1375KGS	2160KGS	2290KGS
Rated power, Approx (Standard power rating)		3HP	7HP	8 1/4HP
Packing dimensions	L x W x H	1890x1430x1930mm	1890x1430x1930mm	2480x2140x2100mm

ESG-1228TD	ESG-1236TD	ESG-1632TD	ESG-1640TD	ESG-2040TD
305x712mm	305x815mm	408x813mm	406x1020mm	506x1020mm
600mm	915mm	813mm	1020mm	1020mm
330mm	330mm	410mm	410mm	500mm
column:720mm	column:720mm	column:720mm	column:720mm	column:720mm
300x700mm	300x800mm	400x800mm	400x1000mm	500x1000mm
760mm	890mm	890mm	890mm	890mm
830mm	930mm	930mm	930mm	930mm
60HZ,5-25ml/min,50HZ,5-20ml/min	60HZ,5-25ml/min,50HZ,5-20ml/min	60HZ,5-25ml/min,50HZ,5-20ml/min	60HZ,5-25ml/min,50HZ,5-20ml/min	60HZ,5-25ml/min,50HZ,5-20ml/min
1~25mm	1~25mm	1~25mm	1~25mm	1~25mm
20~320mm/min	20~320mm/min	20~320mm/min	20~320mm/min	20~320mm/min
350mm	350mm	430mm	430mm	510mm
380mm	380mm	460mm	460mm	520mm
5mm	5mm	5mm	5mm	5mm
0.02mm	0.02mm	0.02mm	0.02mm	0.02mm
0.001~0.05mm	0.001~0.05mm	0.001~0.05mm	0.001~0.05mm	0.001~0.05mm
0.001mm	0.001mm	0.001mm	0.001mm	0.001mm
150mm/min	150mm/min	150mm/min	150mm/min	150mm/min
6mm/min	6mm/min	6mm/min	6mm/min	6mm/min
60HZ,1750 R.P.M. / 50HZ,1450 R.P.M.	60HZ,1750 R.P.M. / 50HZ,1450 R.P.M.	60HZ,1750 R.P.M. / 50HZ,1450 R.P.M.	60HZ,1750 R.P.M. / 50HZ,1450 R.P.M.	60HZ,1750 R.P.M. / 50HZ,1450 R.P.M.
Standard:5HP; optional:7 1/2HP	Standard:5HP; optional:7 1/2HP	Standard:5HP; optional:7 1/2HP	Standard:5HP; optional:7 1/2HP	7 1/2HP
355mm	355mm	355mm	355mm	355mm
50mm	50mm	50mm	50mm	50mm
127mm	127mm	127mm	127mm	127mm
3.0HPx6P	3.0HPx6P	3.0HPx6P	3.0HPx6P	3.0HPx6P
750W	750W	750W	750W	750W
1/4HPx6P	1/4HPx6P	1/4HPx6P	1/4HPx6P	1/4HPx6P
2950x1970x2050mm	3550x1970x2050mm	3290x2200x2050mm	4020x2220x2050mm	4500x2290x2220mm
3020KGS	3330KGS	3400KGS	4000KGS	4800KGS
3520KGS	3700KGS	4000KGS	4500KGS	5200KGS
8 1/2HP(Spindle motor:5HP),	8 1/2HP(Spindle motor:5HP),11HP(Spindle motor:7.5HP)	8 1/2HP(Spindle motor:5HP),11HP(Spindle motor:7.5HP)	8 1/2HP(Spindle motor:5HP),11HP(Spindle motor:7.5HP)	8 1/2HP(Spindle motor:5HP),11HP(Spindle motor:7.5HP)
2500x2290x2220mm	3000x2290x2220mm	2280x2290x2220mm	3250x2290x2220mm	3500x2290x2220mm

An interface for humanistic Technology :

1.COLUMN:

Enlarge honeycomb ribbed column especially suitable for heavy duty grinding.

2.CROSS FEED:

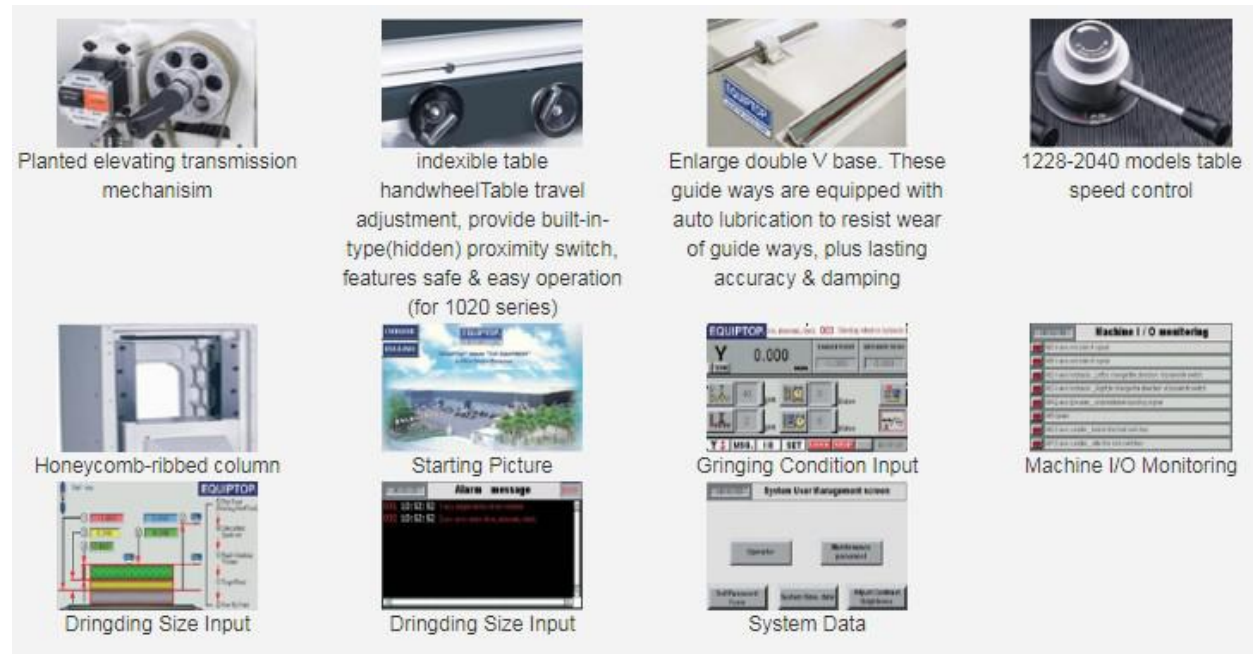
Cross feed ball screw and drive by brushless DC motor, there are have two speed rates-rough grinding speed and finish grinding speed, provide high efficiency.

3.HIGH ANTI-WEAR GUIDE-WAYS:

The saddle rests on precision hand scraped double V ways, and the table rests on precision hand scraped V and flat ways which coated with "TURCITE-B" These guide ways are equipped with auto lubrication to resist wear of guide ways, and provide stable movement and durable accuracy.

4.OPERATION PANEL:

Cross feed movement by AC servo motor drive, cross feed feed rate can be controlled, respectively by rough grinding or finish grinding, greatly enhance the maximum processing efficiency, Z-axis coordinate of the minimum display value 0.001mm, can be setting the cross feed travel on control panel.



Standard Accessories:

- Wheel Extrac Screw & Nut
- Tool Box With Tools
- Balancing
- Auto Lubrication System
- Levelling Screw With Blocks
- Diamond Dresser
- Wheel Flange
- Touch-up Paint
- Grinding Wheel

- Crossfed Ballscrew

Optional Accessories:



Electro Magnetic Chuck



Dynamic Balancer



Frequency Changer



Digital Readout



Auto Paper Feeding
Device With Magnetic
Separator



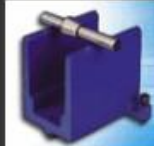
Coolant System With
Magnetic
Separator



Work Lamp



Wheel Flange



Balancing
Stand(Doubleline)



Roller Type Balancing
Stand



Chuck Control With
Demagnetizer



Precision Vice



Punch Former



Manual Pulse Generator
for Y axis, Z axis (Optional)



Dressing Attachment